



UltraForce 275-HD

ULTRAFORCE® 275-HD

Single LRU EO/IR HD Imaging System

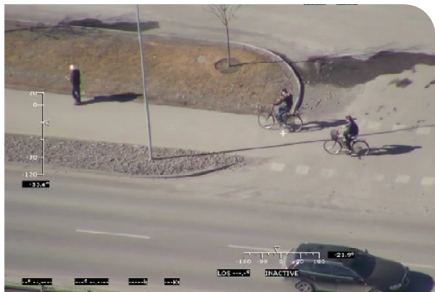
FLIR's UltraForce® 275-HD Gimbal has all European content, single LRU for ease of installation and integration, digital HD output for all video channels, and IMU for precise geo-location. The large format 640 x 512 infrared camera with continuous zoom optics allows for positive target analysis at safe stand-off ranges in all weather conditions and maximizes detection range during daytime surveillance missions. The low light function extends operation into dawn or dusk. Outstanding stability ensures stable imagery by compensating for aircraft movement and vibration, critical for long range imaging. The UltraForce 275-HD can be delivered with EASA Form 1 certification. FLIR also provides standardized wiring to all HD turrets in this family; and to external systems, making this family of systems completely interchangeable and interoperable. Also equipped with Backlit and NVG compatible remote controller the 275-HD allows for 24/7 operation in the modern cockpit with integrated multi-mode auto-tracker to track moving or stationary targets.

APPLICATIONS

- Counter Drug
- Homeland Security
- Patrol
- Surveillance
- Reconnaissance
- Search & Rescue

KEY FEATURES

- All European system, single LRU HD system
- Continuous zoom 3-5 μ m thermal imager
- High Definition color camera
- Laser options
- 4-axis active stabilization
- EASA Certified installations
- Simplified common interface standard
- Optimized usability



Visible and Thermal images from the UltraForce 275-HD

Specifications

Thermal Imaging Performance	
Sensor Type	3rd gen 640 x 512 3-5 μm focal plane array
Image Enhancements	Non Uniformity Correction, Bad Pixel Replacement, AGC (Automatic Gain Control), Histogram, Equalization, Digital Details Enhancement (Tunable)
FOV	Continuous zoom 28° to 1.83°
Ezoom	2x
Daylight Imaging Performance	
Sensor	High Definition CCD
Resolution	1080 x 720
FOV	Continuous zoom 45° to 2.2°
Minimum Illumination	0.5 lux
Gimbal Specifications	
LOS Pan range	360 degrees continuous
LOS Tilt range	+20 / -120 degrees
AZ/EL slew rate	Up to 60°/s
Stow	Magnetically held in stow position
Electronics Control Unit	
Hand Controller Unit	0.8 kg, 230 mm Height
Interfaces	
ARINC 429, RS232/422 and other interfaces to support navigation systems, moving maps, radars, searchlights, and GPS	
Outputs	
Video	720P HD-SDI (all video channels)
Power	
Power requirements	22-30 VDC < 150 W
Overview	
Gimbal size	275 mm (D) x 378.5 mm (H)
Gimbal weight	15 kg
Environmental	RTCA DO-160E
Options	
Auto-Tracker	
Laser Range Finder	
Laser Pointer	
Laser Illuminator	
IMU	
Control Unit	

PORTLAND
Corporate Headquarters
FLIR Systems, Inc.
27700 SW Parkway Ave.
Wilsonville, OR 97070
USA
PH: +1 866.477.3687

SWEDEN
FLIR Systems, AB
Täby, Sweden
PH: +68.8.753.2500

EUROPE
FLIR Systems, Ltd.
West Malling, Kent
United Kingdom
PH: +44.1732.220011

MIDDLE EAST
FLIR Systems
Middle East, FZCO
Dubai
Airport Free Zone

www.flir.com
NASDAQ: FLIR

Equipment described herein may require US Government authorization for export purposes. Diversion contrary to US law is prohibited. Imagery for illustration purposes only. Specifications are subject to change without notice. ©2015 FLIR Systems, Inc. All rights reserved. (Updated 07/06/15)